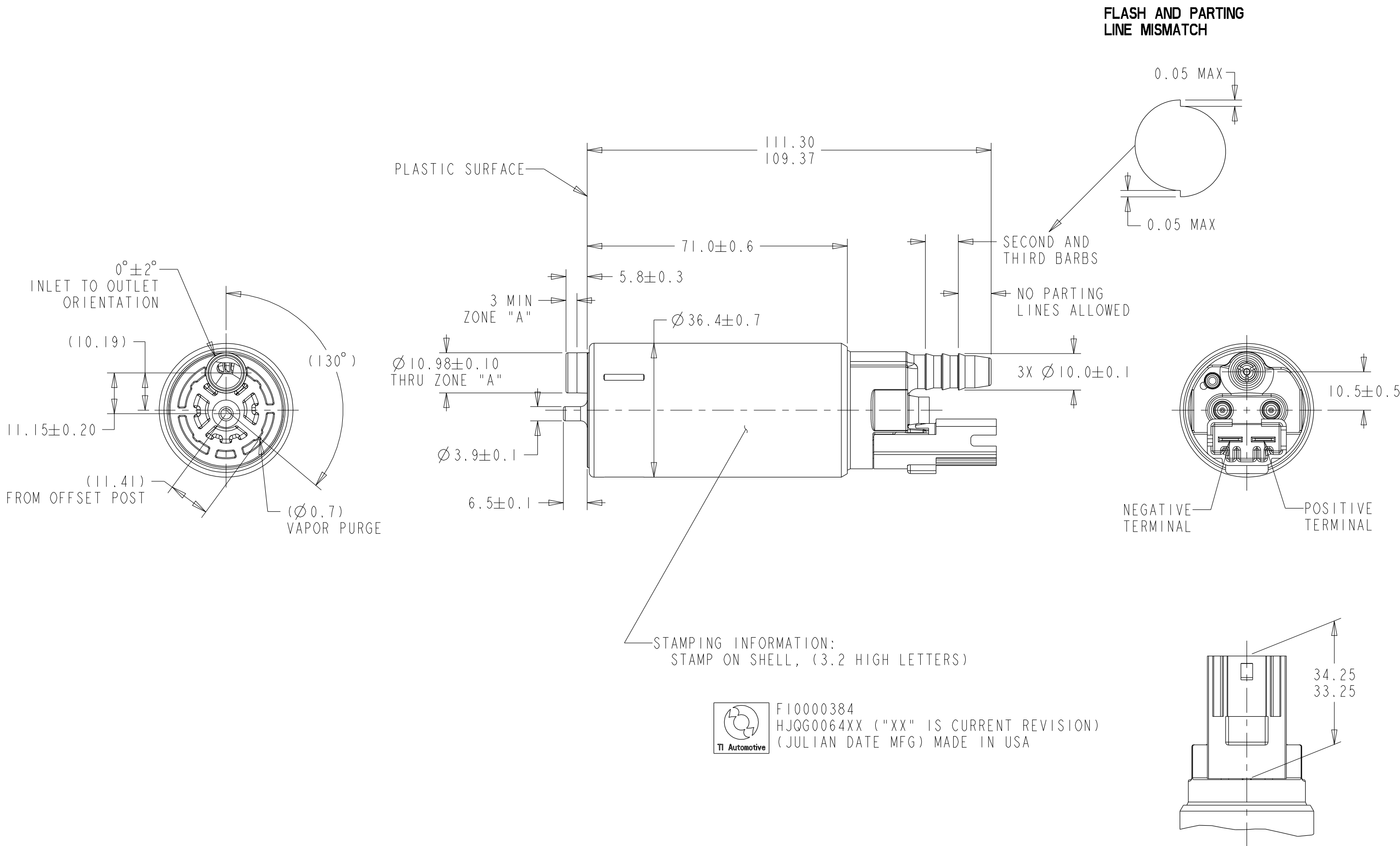
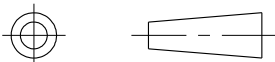



REVISIONS						
ZONE	LTR	DESCRIPTION	CHANGE No	DATE	BY	APPR'D
	AA	INITIAL RELEASE	DR95916	02JUN23	JTK	BLM



F10000384  
HJQG0064XX ("XX" IS CURRENT REVISION)  
(JULIAN DATE MFG) MADE IN USA

KEY PRODUCT CHARACTERISTICS				
REFER TO TI AUTOMOTIVE GLOBAL ADVANCED QUALITY PLANNING DOCUMENT CW-4-ALL-411 FOR THE CLASSIFICATION AND CONTROL OF KEY PRODUCT CHARACTERISTICS				
TYPE OF CHARACTERISTIC	SAFETY	REGULATORY	FUNCTION	FUNCTION PROCESS
	SC	SC	SC	SC
NUMBER PER EACH CHARACTERISTIC	--	--	--	--
TOTAL NUMBER OF CHARACTERISTICS	--	--	--	--
- TI AUTOMOTIVE CONFIDENTIAL AND PROPRIETARY - THIS DRAWING IS PROPERTY OF TI AUTOMOTIVE. TI AUTOMOTIVE CLAIMS PROPRIETARY RIGHTS IN THE SUBJECT MATTER SHOWN AND DESCRIBED ON THIS DRAWING AND RETAINS ALL INTELLECTUAL PROPERTY RIGHTS. THE DRAWING IS PROVIDED FOR REFERENCE PURPOSES ONLY AND ON THE EXPRESS CONDITION THAT IT WILL BE HELD IN CONFIDENCE. THIS DRAWING SHALL NOT BE DISCLOSED TO OTHERS OR USED FOR THE PURPOSE OF MANUFACTURE BY OR PROCUREMENT FROM OTHERS OF THE ARTICLE OR PART SHOWN WITHOUT TI AUTOMOTIVE'S EXPRESS WRITTEN CONSENT. NO LICENSE OR OTHER RIGHT IS GIVEN OR IMPLIED BY THE PROVISION OF THIS DRAWING TO RECIPIENT. COPYRIGHT, TI AUTOMOTIVE 2018, ALL RIGHTS RESERVED.				

METRIC			
ALL DIMENSIONS ARE IN MILLIMETERS			
DO NOT SCALE			
DECIMAL TOLERANCES UNLESS OTHERWISE SPECIFIED ONE PLACE ±0.25 TWO PLACE ±0.13 ANGLES ±1°			
		THIRD ANGLE PROJECTION	
DIMENSIONS IN ACCORDANCE WITH ASME Y14.5 - 2009			
		630 COLUMBIA ST. CARO, MI 48723 +1 989.673.7727	
TI Automotive			
ENGINEER:	B.MIDDLETON	02JUN2023	MATERIAL/SPECIFICATION:
DESIGNER:	J.KULIGOWSKI	02JUN2023	
CAD SYSTEM: PRO/E	SCALE: 1:1	SHEET NO. 1 OF 1	
REFERENCE ID/REV.: HJQC0064		2D PLM REFERENCE/REV.: AR3105879/AA	
REFERENCE ID/REV.: 300115048/AA		3D PLM REFERENCE/REV.: AR3105874/AA	
DRAWING NAME: FUEL PUMP OUTLINE			
SIZE: A2	DRAWING NUMBER: F10000384		